

LZ22008 Hand Lamp

- Classical and economic design
- 150° bendable design
- Strong magnet





Logo Area

- Provide customize Logo

Professional Lens

- Clear and bright light distribution

Charging Indicator

- Red: charging
- Green: full charge

ON-OFF Button



- Press button: spot light-main light-off

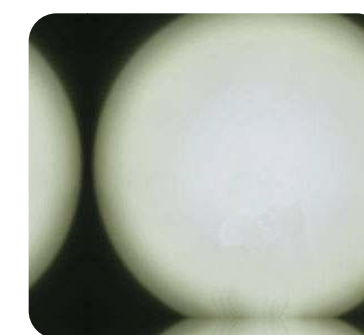
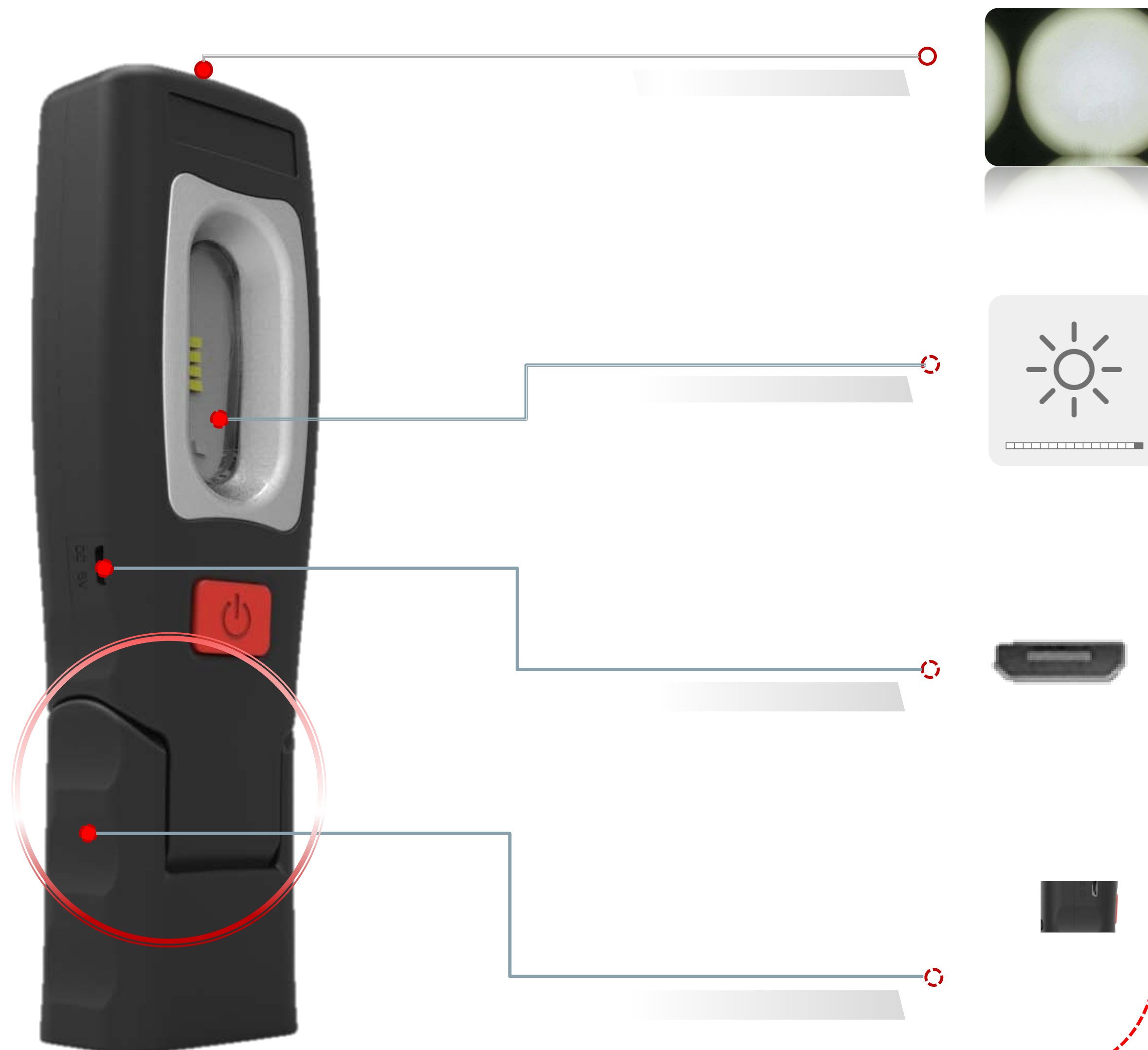


Powerful lithium-ion battery

- 2200mAh battery with long life

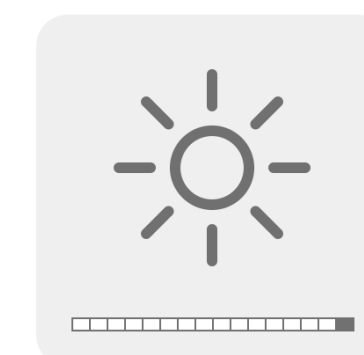


www.twincodk.dk
www.twincochina.com



Spot Light

- 100lm spotlight used as flashlight



Main light

- Provide 250 lumen output
- Eco-design for environment friendly



USB Charging port

- Universal port for charging friendly



150° Bendable Base

- For right direction working



360° Foldable Rotatable Hook

- For fundational lamp placing

Surface

- Rubber coating for non-slip and enables a comfortable grip



Strong Built-in Magnet

- Magnetic base for hand free working

String

- Take the lamp anywhere conveniently



Model	LZ22008
-------	---------

Lumen	100 lm (spot light) 250 lm (main light)
Light angle	120°
CCT	5500-6500K
Discharging time	6 h (spot light) 4 h (main light)
Charging time	4 h
IP	20
Material	ABS + rubber
Battery type	Li-Ion
Battery capacity	3.7V/ 2200mAh
Adaptor output	5V1A
Charging port	Micro USB
Cable	USB charging cable, 1.2m
Size	189 x 57.4 x 36.1 mm
Weight	198 g (excluding adaptor)